

**ITS TRAIL MAP**  
2008-2009 Season **FREE**

**Maine Snowmobile Trails**

**RIDE RIGHT in Maine**

Map of Maine's Statewide Interconnected Snowmobile Trail System (ITS)

This map is provided for snowmobilers through the joint effort of the Maine Snowmobile Association and the Maine Department of Conservation.

**Maine Snowmobile Association**  
PO Box 89, Augusta, ME 04332  
207-622-6983 • [mesnow.com](http://mesnow.com)  
Trail Conditions: [www.mesnow.com](http://www.mesnow.com)

**Maine Department of Conservation**  
Bureau of Parks and Lands-Snowmobile Program  
State House Station #22, Augusta, ME 04333  
207-287-4957 • [charmond.martin@maine.gov](mailto:charmond.martin@maine.gov)  
[www.maine.gov/dcof](http://www.maine.gov/dcof)

The trail system as shown on this map has been approved as meeting reasonable guidelines. Temporary trail closures, relocations or insufficient snow depth and other related problems may make some sections of trail unsuitable for public use.

Cover photo by Alan Swett  
Map prepared from U.S.G.S. 1:250,000 Digital Line Graph data and data layers obtained from Maine Office of Geographic Information Systems  
Map image copyright 2009 © The Maine Snowmobile Association



**Respect Maine Landowners**

Over 95% of Maine's snowmobile trails are located on private land. Whenever you ride on a snowmobile trail, you are most likely the guest of a private landowner who has chosen to provide access. Please thank them by staying on the marked trail, observing all snowmobile laws and carrying out any and all litter.

**Ride Responsibly**

1. Never drink alcohol and operate a snowmobile.
2. Always operate at a reasonable speed for current trail conditions. Trail enforcement details occasionally mark the trail on a curve or rise to divide the lanes and identify snowmobilers who are operating recklessly or driving to endanger. If you travel on the wrong side of the trail you may be charged with an offense.
3. Stay on the right side of the trail and park to the right in single file or stop off the edge of the groomed surface.
4. Always yield to trail grooming equipment. This equipment may be encountered on any trail at any time of day or night.
5. Do not pass another sled unless recognized and motioned to pass by the snowmobile operator ahead of you.
6. Respect the trail crews and leave the trail in good condition.
7. Never ride on plowed roads except at legal crossings.
8. Carry in, carry out ALL trash, including cigarette butts.
9. Respect the landowner's property, stay on the trail and do no damage to trees, shrubs or other natural features.
10. Know and obey Maine snowmobile law.

**PLEASE STAY ON MARKED TRAIL**

Support the Office of Landowner Relations and Protect Recreational Access in Maine  
**SUPERSPORT**  
Your Superior Registration  
[www.maine.gov/lfw](http://www.maine.gov/lfw)

**FUN ON THE TRAILS, NOT ON THE RAILS**  
RAILROAD TRESPASSING IS DANGEROUS AND ILLEGAL  
Maine Operation Lifesaver  
[www.oli.org](http://www.oli.org)

**Snowmobilers Support Sound Forestry Practices**  
Maine's Sustainable Forestry Initiative  
1-888-SFI-GOAL  
(1-888-734-4635)

Help Us Stop Maine's Fish & Wildlife LAW VIOLATORS  
Call Operation Game Thief  
1-800-253-7887

**Expect Grooming Equipment On The Trail Anywhere, 24 Hours A Day**  
Due to weather conditions, traffic patterns or volunteer scheduling. Equipment may take the full width of the trail.

**For Emergency Assistance:**  
To Reach a Maine Warden 24 Hours A Day, Contact a Regional Communication Center:  
AUGUSTA 1-800-452-4684  
GRAY 1-800-482-0730  
HOULTON 1-800-924-2261  
ORONO 1-800-432-7381

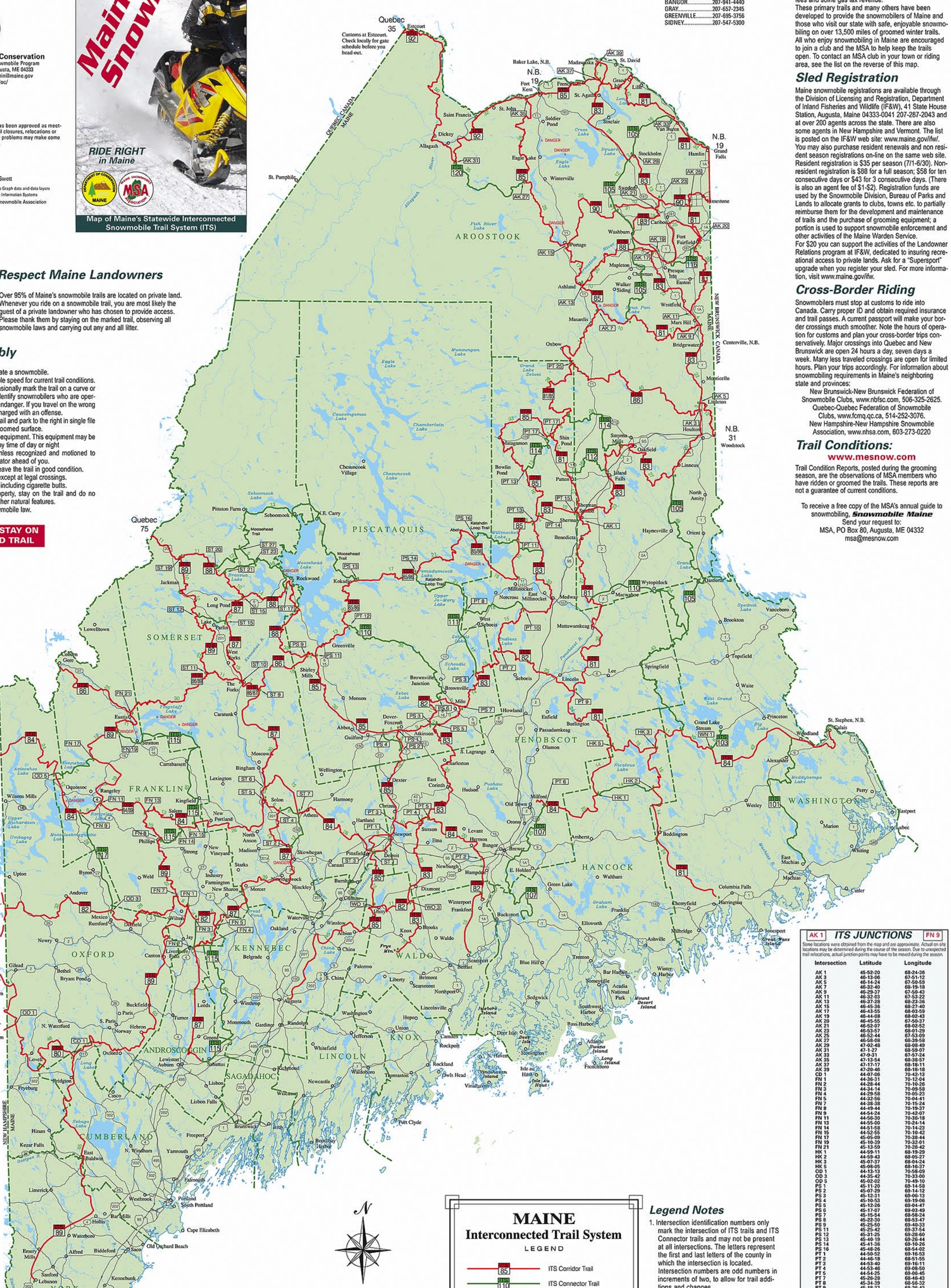
**Regional Warden Service Headquarters**  
ASHLAND 207-435-3231  
BANGOR 207-941-4440  
GRAY 207-657-2345  
GREENVILLE 207-695-3756  
SIDNEY 207-547-5300

**The Trails:**  
The snowmobile trails depicted on this map are created through the efforts of the members of the clubs of the Maine Snowmobile Association (MSA), the Snowmobile Division of the Bureau of Parks & Lands-Maine Department of Conservation, participating municipalities and many generous landowners across the state who allow snowmobile trails on their property.  
To create and maintain these winter trails, Maine snowmobile clubs, chambers of commerce, municipalities and businesses have provided thousands of volunteer hours, a considerable amount of their own funds and trail grooming equipment to supplement the monies provided to the trail system by snowmobile registration fees and some gas tax revenue.  
These primary trails and many others have been developed to provide the snowmobilers of Maine and those who visit our state with safe, enjoyable snowmobiling on over 13,500 miles of groomed winter trails. All who enjoy snowmobiling in Maine are encouraged to join a club and the MSA to help keep the trails open. To contact an MSA club in your town or riding area, see the list on the reverse of this map.

**Sled Registration**  
Maine snowmobile registrations are available through the Division of Licensing and Registration, Department of Inland Fisheries and Wildlife (IF&W), 41 State House Station, Augusta, Maine 04333-0041 207-287-2043 and at over 200 agents across the state. There are also some agents in New Hampshire and Vermont. The list is posted on the IF&W web site: [www.maine.gov/lfw](http://www.maine.gov/lfw). You may also purchase registration renewals and non resident season registrations on-line on the same web site. Resident registration is \$35 per season (7/1-6/30). Non-resident registration is \$88 for a full season; \$58 for ten consecutive days or \$43 for 3 consecutive days. (There is also an agent fee of \$1-\$2). Registration funds are used by the Snowmobile Division, Bureau of Parks and Lands to allocate grants to clubs, towns etc. to partially reimburse them for the development and maintenance of trails and the purchase of grooming equipment; a portion is used to support snowmobile enforcement and other activities of the Maine Warden Service. For \$20 you can support the activities of the Landowner Relations program at IF&W, dedicated to insuring recreational access to private lands. Ask for a "Supersport" upgrade when you register your sled. For more information, visit [www.maine.gov/lfw](http://www.maine.gov/lfw).

**Cross-Border Riding**  
Snowmobilers must stop at customs to ride into Canada. Carry proper ID and obtain required insurance and trail passes. A current passport will make your border crossings much smoother. Note the hours of operation for customs and plan your cross-border trips conservatively. Major crossings into Quebec and New Brunswick are open 24 hours a day, seven days a week. Many less traveled crossings are open for limited hours. Plan your trips accordingly. For information about snowmobiling requirements in Maine's neighboring state and provinces:  
New Brunswick-New Brunswick Federation of Snowmobile Clubs, [www.nbfsc.com](http://www.nbfsc.com), 506-325-2625.  
Quebec-Quebec Federation of Snowmobile Clubs, [www.fcmq.qc.ca](http://www.fcmq.qc.ca), 514-252-3076.  
New Hampshire-New Hampshire Snowmobile Association, [www.nhsa.com](http://www.nhsa.com), 603-273-0220

**Trail Conditions:**  
[www.mesnow.com](http://www.mesnow.com)  
Trail Condition Reports, posted during the grooming season, are the observations of MSA members who have ridden or groomed the trails. These reports are not a guarantee of current conditions.  
To receive a free copy of the MSA's annual guide to snowmobiling, **Snowmobile Maine** Send your request to:  
MSA, PO Box 80, Augusta, ME 04332  
[msa@mesnow.com](mailto:msa@mesnow.com)



**MAINE Interconnected Trail System LEGEND**

- ITS Corridor Trail
- ITS Connector Trail
- Mileage between points approx.
- Intersection Markers
- Known Hazardous Areas
- County Line

**SCALE**  
0 10 20 Miles  
0 10 20 30 40 Kilometers

**Legend Notes**

1. Intersection identification numbers only mark the intersection of ITS trails and ITS Connector trails and may not be present at all intersections. The letters represent the first and last letters of the county in which the intersection is located. Intersection numbers are odd numbers in increments of two, to allow for trail additions and changes.
2. The "x DANGER" symbol represents known hazardous areas, there may and will be other potentially hazardous areas off the authorized trails. Please stay on marked trails.

**Map and Trail Notes**

1. This publication is a general informational map only.
2. Trail locations may be subject to change at any time.
3. Stay on marked trails.
4. Caution: Trail conditions may change daily.
5. Trail grooming equipment may be encountered day or night. Snowmobilers must always yield to grooming equipment.

**AK 1 ITS JUNCTIONS FN 9**

Some locations were obtained from the map and are approximate. Actual on-site locations may be determined during the grooming season. Due to unexpected trail relocations, actual junction points may have to be moved during the season.

Intersection	Latitude	Longitude
AK 1	45-52-20	68-24-36
AK 3	46-13-06	67-51-12
AK 5	46-14-24	67-50-58
AK 7	46-32-40	68-18-18
AK 9	46-29-27	67-59-27
AK 11	46-32-03	67-53-22
AK 13	46-37-28	68-23-36
AK 15	46-45-38	68-27-40
AK 17	46-43-25	68-03-59
AK 19	47-19-27	68-05-07
AK 20	46-45-55	67-58-37
AK 21	46-52-07	68-01-29
AK 22	46-53-57	67-53-09
AK 25	46-52-44	68-38-58
AK 27	47-02-48	68-06-49
AK 29	47-02-48	68-06-49
AK 31	47-12-27	68-27-24
AK 33	47-19-31	67-57-24
AK 35	47-13-54	68-33-57
AK 37	47-17-17	68-18-11
AK 39	47-20-46	68-18-11
CD 1	44-07-06	70-12-04
FN 1	44-36-31	70-12-04
FN 2	44-36-44	70-10-26
FN 3	44-34-14	70-09-58
FN 4	44-29-58	70-09-23
FN 5	44-32-56	70-04-41
FN 7	44-38-38	70-15-24
FN 8	44-49-44	70-07-37
FN 9	44-54-24	70-45-07
FN 11	44-56-30	70-09-18
FN 13	44-55-00	70-24-14
FN 14	44-51-58	70-14-29
FN 15	44-52-55	70-10-42
FN 17	45-05-09	70-38-44
FN 19	45-16-39	70-32-01
FN 21	45-13-59	70-28-42
FN 22	45-13-59	70-28-42
HK 1	44-59-43	68-05-27
HK 2	44-59-43	68-05-27
HK 5	45-08-05	68-16-37
OD 1	44-13-13	70-58-09
OD 3	44-07-06	70-33-00
OD 5	45-02-02	70-49-10
PS 1	45-29-29	68-14-12
PS 2	45-29-29	68-14-12
PS 4	45-10-53	69-19-06
PS 5	45-12-26	69-04-47
PS 6	45-12-07	69-03-49
PS 7	45-15-54	68-58-24
PS 8	45-12-36	68-59-25
PS 9	45-25-50	68-40-32
PS 10	45-21-25	68-37-54
PS 12	45-21-25	68-40-40
PS 13	45-40-19	68-26-44
PS 14	45-16-36	68-46-43
PS 16	45-48-28	68-54-02
PS 18	45-29-58	68-29-52
PT 2	44-46-18	68-51-55
PT 4	44-53-46	68-50-50
PT 5	44-54-25	68-06-45
PT 8	45-34-39	68-56-32
PT 9	45-18-37	68-29-51
PT 10	45-34-58	68-40-37
PT 11	45-48-29	68-32-24
PT 13	45-52-51	68-36-14
PT 14	45-52-51	68-36-14
PT 16	46-01-41	68-39-58
PT 17	45-07-07	68-29-51
PT 25	46-22-23	68-28-36
ST 2	44-47-33	68-21-43
ST 3	44-47-33	68-21-43
ST 5	44-57-39	68-51-59
ST 6	44-57-39	68-51-59
ST 7	44-54-57	69-42-25
ST 8	44-54-57	69-42-25
ST 9	44-54-57	69-42-25
ST 10	44-54-57	69-42-25
ST 11	44-54-57	69-42-25
ST 12	44-54-57	69-42-25
ST 13	44-54-57	69-42-25
ST 14	44-54-57	69-42-25
ST 15	44-54-57	69-42-25
ST 16	44-54-57	69-42-25
ST 17	44-54-57	69-42-25
ST 18	44-54-57	69-42-25
ST 19	44-54-57	69-42-25
ST 20	44-54-57	69-42-25
ST 21	44-54-57	69-42-25
ST 22	44-54-57	69-42-25
ST 23	44-54-57	69-42-25
ST 24	44-54-57	69-42-25
ST 25	44-54-57	69-42-25
ST 26	44-54-57	69-42-25
ST 27	44-54-57	69-42-25
WO 1	44-37-01	69-21-45
WO 3	44-38-02	69-11-52

**Trail & Map Usage**  
This snowmobile map should not be used to determine travel routes for any vehicle other than a snowmobile. It is against the law in Maine to operate an ATV, dune buggy, 4-wheel drive vehicle, motorcycle or any other motor vehicle other than a snowmobile on a snowmobile trail financed in part with funds from the Snowmobile Trail Fund, unless the landowner has given permission for the activity. This is true at any time of the year. Those seeking to access the snowmobile trails for non-motorized activities should offer landowners this same courtesy: "Ask First".